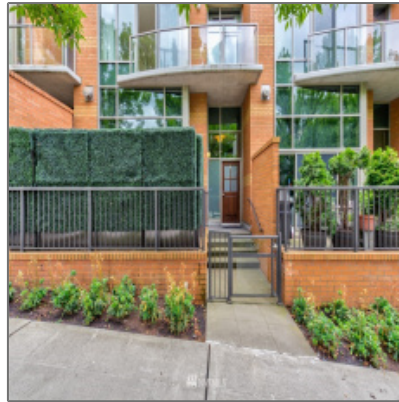


# Residential For Sale

1,943 Sqft - 19668 9th, Bellevue, Washington  
98004



## Basic Details

Property Type: **Residential**

Listing Type: **For Sale**

Listing ID: **NWM1813576**

Price: **\$1,660,000**

Bedrooms: **2**

Bathrooms: **1**

Half Bathrooms: **1**

Square Footage: **1,943 Sqft**

Year Built: **2008**

Lot Area: **0.04 Sqft**

Structure Type: **Townhouse**

Status: **Active**

Total Bathrooms: **2.25**

Community: **Downtown**

Property Sub Type: **Residential**

## Features

✓ Cooling System: **1**

✓ Basement: **None**

✓ Roof: **See Remarks**

✓ Parking: **2**

✓ Furnished: **Unfurnished**

✓ Interior Features: **Storage, Double Pane/storm Window, Walk-in Closet(s), High Efficiency - 90%+**

✓ Exterior Features: **See Remarks**

✓ Community Features: **Club House, Gated, Ccrs**

✓ Heating Cooling Type: **Central A/c, Wall**

✓ Water Heater Location: **Main Condo Building**

✓ Parking Type: **Garage-attached**

✓ Building Information: **Attached/zero Lot Line**

✓ Levels: **Multi/split**

✓ Fireplaces Total:

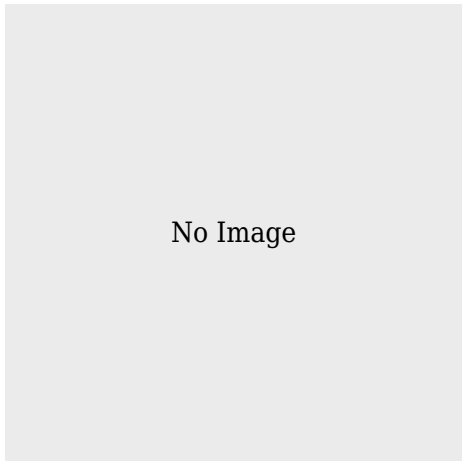
		1
✓	Garage Spaces:	2
✓	Water Heater Type:	Central
✓	Utilities:	Electricity Available, See Remarks, Common Area Maintenance, Snow Removal, Sewer Connected, Natural Gas Connected, Road Maintenance
✓	Flooring:	Carpet, Hardwood
✓	Energy Source:	Electric, Natural Gas
✓	Covered Spaces:	2
✓	Appliances:	Dryer, Microwave, Refrigerator, Washer, Dishwasher, Range/oven
✓	Inclusions:	Dryer, Microwave, Refrigerator, Washer, Dishwasher, Rangeoven
✓	FoundationDetails:	Poured Concrete
✓	Possession:	Closing
✓	PropertyCondition:	Good
✓	ListingTerms:	Cash Out, Conventional
✓	NWM_EnergySource:	Electric, Natural Gas
✓	GarageYN:	1
✓	Sewer:	Sewer Connected


## Address [Map](#)

Country:	<b>US</b>
State:	<b>WA</b>
County:	<b>King</b>
City:	<b>Bellevue</b>
Zipcode:	<b>98004</b>
Street:	<b>9th</b>

Street Number:	19668
Floor Number:	0
Longitude:	W123° 48' 8.3"
Latitude:	N47° 37' 9.4"
Unit Number:	TH16
Street dir prefix:	NE
Street dir suffix:	Place
Stories Total:	0
Directions:	<b>From I-405 onto NE 8th, right onto 106th Ave NE. If you cannot find free parking nearby, use 1100 Bellevue Way NE, shopping center parking and walk over. Homes faces NE 10th St.</b>

Agent [Info](#)



 [admin@team-harlington.com](mailto:admin@team-harlington.com)

-