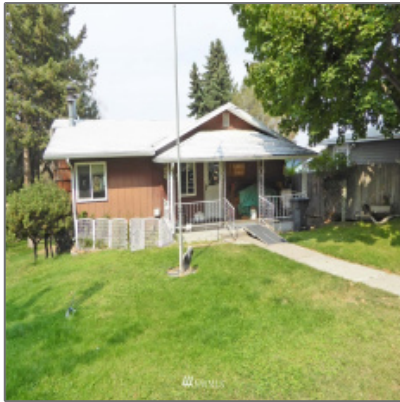


Residential For Sale

2,662 Sqft - 508 Center, Grand Coulee,
Washington 99133



Basic Details

Property Type: **Residential**

Listing Type: **For Sale**

Listing ID: **NWM1837780**

Price: **\$239,500**

Bedrooms: **1**

Bathrooms: **1**

Half Bathrooms: **1**

Square Footage: **2,662 Sqft**

Year Built: **1934**

Lot Area: **0.70 Sqft**

Structure Type: **House**

Status: **Active**

Total Bathrooms: **1.5**

Community: **Grand Coulee**

Property Sub Type: **Residential**

Features

✓ Heating System:	1
✓ Basement:	Unfinished, Daylight
✓ View:	Territorial
✓ Roof:	Metal
✓ Furnished:	Unfurnished
✓ Lot Features:	Paved, Sidewalk, Value In Land, Dead End Street, Corner Lot
✓ Interior Features:	Double Pane/storm Window, Heat Pump, Ceramic Tile, Laminate, Bath Off Primary, Vaulted Ceiling(s), Wired For Generator, High Efficiency - 90%+
✓ Parking Features:	Rv Parking, Off Street, Driveway
✓ Exterior Features:	Stucco, Metal/vinyl
✓ Site Features:	Cable Tv, High Speed Internet, Rv Parking, Deck, Outbuildings, Shop
✓ Community Features:	Playground, Boat Launch,

		Park, Golf, Airfield
✓	Heating Cooling Type:	90%+ High Efficiency, 90%+ High Efficiency
✓	Water Heater Location:	Downstairs
✓	Building Information:	Built On Lot
✓	Levels:	One
✓	Fireplaces Total:	1
✓	Water Heater Type:	Electric
✓	Utilities:	Cable Connected, High Speed Internet, Electricity Available, Sewer Connected
✓	Flooring:	Vinyl, Carpet
✓	Energy Source:	Electric
✓	Appliances:	Microwave, Refrigerator, Stove/range, Dishwasher
✓	Inclusions:	Microwave, Refrigerator, Stoverange, Dishwasher, Leasedequipment
✓	FoundationDetails:	Poured Concrete
✓	Possession:	Closing
✓	Topography:	Level
✓	Vegetation:	Garden Space
✓	ListingTerms:	Conventional, Fha, Va Loan, Usda Loan
✓	NWM_EnergySource:	Electric
✓	Sewer:	Sewer Connected

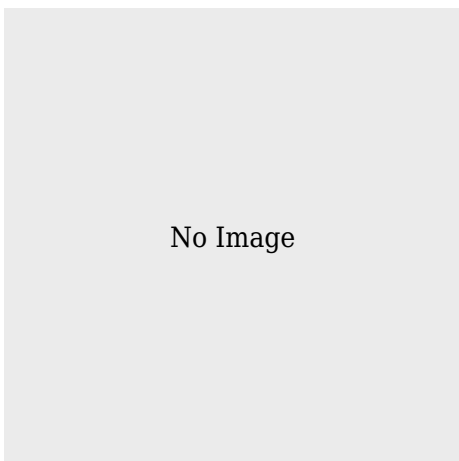
Address [Map](#)

Country:	US
State:	WA
County:	Grant

City:	Grand Coulee
Zipcode:	99133
Street:	Center
Street Number:	508
Building Name:	Replat & Add to GCA, GC
Floor Number:	0
Longitude:	W120° 59' 38.5"
Latitude:	N47° 56' 14.5"
Street dir suffix:	Street
Stories Total:	0

Directions: **From Intersection
with Hwy 155 &
Hwy 174, Head E on
Highway 155
towards Wilbur,
turn Left on
Federal Ave, Turn
Right on Partello
St, Right on Center
Street, home on the
Right.**

Agent [Info](#)



✉ admin@team-harlington.com

-
