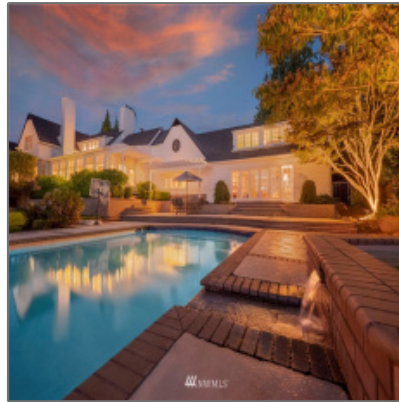
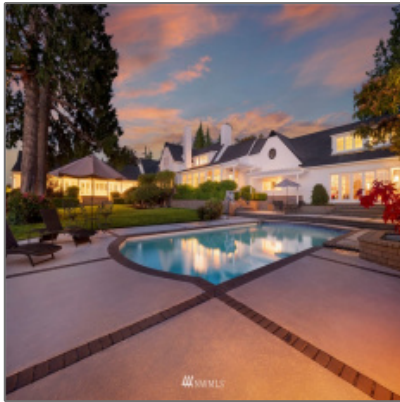


# Residential For Sale

10,000 Sqft - 3727 Shore, Everett, Washington  
98203



## Basic Details

Property Type:	<b>Residential</b>
Listing Type:	<b>For Sale</b>
Listing ID:	<b>NWM1808138</b>
Price:	<b>\$4,969,000</b>
Bedrooms:	<b>5</b>
Bathrooms:	<b>1</b>
Half Bathrooms:	<b>2</b>
Square Footage:	<b>10,000 Sqft</b>
Year Built:	<b>1940</b>
Lot Area:	<b>1.29 Sqft</b>
Structure Type:	<b>House</b>
Status:	<b>Active</b>
Total Bathrooms:	<b>5.75</b>
Community:	<b>Edgewater</b>
Property Sub Type:	<b>Residential</b>

## Features

✓ Heating System:	<b>1</b>
✓ Basement:	<b>Finished</b>
✓ View:	<b>Mountain(s), Sound</b>
✓ Roof:	<b>Composition</b>
✓ Parking:	<b>7</b>
✓ Furnished:	<b>Unfurnished</b>
✓ Lot Features:	<b>Curbs, Paved, Secluded</b>
✓ Interior Features:	<b>High Efficiency - 90%+, Central A/c, Heat Pump, Laminate, Ceiling Fan(s), Vaulted Ceiling(s), Walk-in Pantry, Hardwood, Laminate Tile, High Efficiency - 90%+, French Doors, Wired For Generator, Laminate Hardwood, High Efficiency - 90%+, High Efficiency - 90%+, High Efficiency - 90%+, Second Kitchen, High Efficiency - 90%+</b>
✓ Waterfront Features:	<b>Bank-medium</b>
✓ Exterior Features:	

		Wood
✓	Site Features:	Cable Tv, Gas Available, High Speed Internet, Outbuildings, Fenced-fully, Gated Entry, Patio, Shop, Sprinkler System, Irrigation, Hot Tub/spa
✓	Community Features:	Playground, Community Waterfront/pvt Beach, Tennis Courts, Boat Launch, Park, Airfield
✓	Heating Cooling Type:	Wall, 90%+ High Efficiency, 90%+ High Efficiency
✓	Water Heater Location:	3x One In Each Laundry Room And Basement
✓	Building Information:	Built On Lot
✓	Levels:	Two
✓	Fireplaces Total:	5
✓	Water Heater Type:	Gas
✓	Utilities:	Cable Connected, High Speed Internet, Natural Gas Available, Electricity Available, Sewer Connected, Natural Gas Connected
✓	Flooring:	Marble
✓	Energy Source:	Electric, Natural Gas
✓	Pool Type:	In-ground
✓	Pool Features:	In Ground
✓	Covered Spaces:	7
✓	Appliances:	Dryer, Microwave, Refrigerator, Stove/range, Washer, Dishwasher, Double Oven, Trash Compactor, Disposal
✓	Inclusions:	Dryer, Microwave, Refrigerator, Stoverange, Washer, Dishwasher, Doubleoven,

	Trashcompactor, Garbagedisposal
✓ FoundationDetails:	Poured Concrete
✓ Possession:	Closing
✓ Topography:	Level
✓ PropertyCondition:	Very Good
✓ ListingTerms:	Cash Out, Conventional
✓ NWM_EnergySource:	Electric, Natural Gas
✓ Sewer:	Sewer Connected
✓ SpaYN:	1

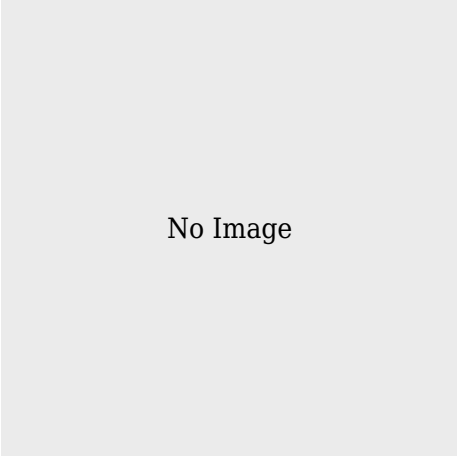
## Address [Map](#)

Country:	<b>US</b>
State:	<b>WA</b>
County:	<b>Snohomish</b>
City:	<b>Everett</b>
Zipcode:	<b>98203</b>
Street:	<b>Shore</b>
Street Number:	<b>3727</b>
Floor Number:	<b>0</b>
Longitude:	<b>W123° 42' 56.5"</b>
Latitude:	<b>N47° 57' 10.9"</b>
Street dir suffix:	<b>Avenue</b>
Builder Name:	<b>Weyerhaeuser</b>
Stories Total:	<b>0</b>

Directions: **North on Mukilteo  
Speedway to 5th St.  
East through  
Mukilteo on Muk  
Blvd to Shore.  
North past park to  
gated driveway.**

Agent Info

---



✉ admin@team-harlington.com

-

---