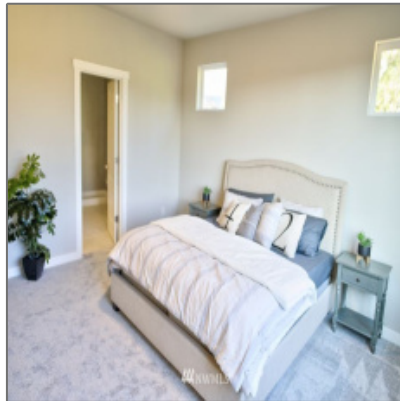


# Residential For Sale

1,972 Sqft - 943 Yew, Sultan, Washington 98294



## Basic Details

|                    |                     |
|--------------------|---------------------|
| Property Type:     | <b>Residential</b>  |
| Listing Type:      | <b>For Sale</b>     |
| Listing ID:        | <b>NWM1832742</b>   |
| Price:             | <b>\$733,200</b>    |
| Bedrooms:          | <b>3</b>            |
| Bathrooms:         | <b>2</b>            |
| Half Bathrooms:    | <b>1</b>            |
| Square Footage:    | <b>1,972 Sqft</b>   |
| Year Built:        | <b>2021</b>         |
| Lot Area:          | <b>0.19 Sqft</b>    |
| Structure Type:    | <b>House</b>        |
| Status:            | <b>Active</b>       |
| Total Bathrooms:   | <b>2.5</b>          |
| Community:         | <b>Sultan Basin</b> |
| Property Sub Type: | <b>Residential</b>  |

## Features

|                       |  |
|-----------------------|--|
| ✓ Heating System:     | <b>1</b>   |
| ✓ Cooling System:     | <b>1</b>   |
| ✓ Basement:           | <b>None</b>  |
| ✓ Roof:               | <b>Composition</b>   |
| ✓ Parking:            | <b>3</b>   |
| ✓ Furnished:          | <b>Unfurnished</b>   |
| ✓ Lot Features:       | <b>Paved, Sidewalk</b>   |
| ✓ Interior Features:  | <b>High Efficiency - 90%+, Forced Air, Wall To Wall Carpet, Double Pane/storm Window, Vaulted Ceiling(s), High Efficiency - 90%+, Radiator</b> |
| ✓ Parking Features:   | <b>Attached Garage</b>   |
| ✓ Exterior Features:  | <b>Cement Planked</b>  |
| ✓ Site Features:      | <b>Cable Tv, Gas Available, High Speed Internet, Fenced-fully, Patio</b>   |
| ✓ Community Features: | <b>Ccrs</b>  |
| ✓ Heating Cooling     |  |

|                          |  |
|--------------------------|--|
| Type:                    | Wall, Insert, 90%+ High Efficiency   |
| ✓ Water Heater Location: | Garage   |
| ✓ Building Information:  | Built On Lot   |
| ✓ New Construction:      | Presale  |
| ✓ Levels:                | One  |
| ✓ Fireplaces Total:      | 1  |
| ✓ Garage Spaces:         | 3  |
| ✓ Water Heater Type:     | Electric Hybrid  |
| ✓ Utilities:             | Cable Connected, High Speed Internet, Natural Gas Available, Electricity Available, Sewer Connected, Natural Gas Connected |
| ✓ Flooring:              | Ceramic Tile, Laminate, Carpet, Vinyl Plank  |
| ✓ Energy Source:         | Electric, Natural Gas  |
| ✓ Covered Spaces:        | 3  |
| ✓ Appliances:            | Microwave, Stove/range, Dishwasher, Disposal   |
| ✓ Inclusions:            | Microwave, Stoverange, Dishwasher, Garbagedisposal   |
| ✓ FoundationDetails:     | Poured Concrete  |
| ✓ Possession:            | Closing  |
| ✓ Topography:            | Level  |
| ✓ Vegetation:            | Garden Space   |
| ✓ PropertyCondition:     | Under Construction   |
| ✓ ListingTerms:          | Cash Out, Conventional, Fha, Va Loan   |
| ✓ NWM_EnergySource:      | Electric, Natural Gas  |
| ✓ GarageYN:              | 1  |



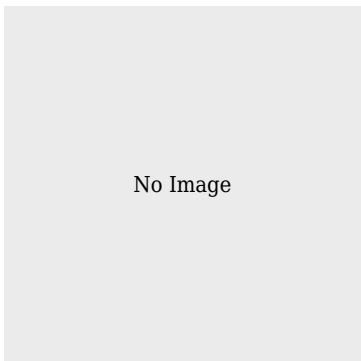
Sewer:

Sewer Connected

## Address [Map](#)

|                    |   |
|--------------------|---|
| Country:           | <b>US</b>   |
| State:             | <b>WA</b>   |
| County:            | <b>Snohomish</b>  |
| City:              | <b>Sultan</b>   |
| Zipcode:           | <b>98294</b>  |
| Street:            | <b>Yew</b>  |
| Street Number:     | <b>943</b>  |
| Building Name:     | <b>Daisy Meadows</b>  |
| Floor Number:      | <b>0</b>  |
| Longitude:         | <b>W122° 15' 4.7"</b>   |
| Latitude:          | <b>N47° 52' 41.5"</b>   |
| Street dir suffix: | <b>Avenue</b>   |
| Builder Name:      | <b>Acme Homes LLC</b>   |
| Stories Total:     | <b>0</b>  |
| Directions:        | <b>Head East on Highway 2 through Sultan and turn left on Sultan Basin rd. Follow to 135th St SE / Bryant Rd. watch for signs that read Daisy Meadows. Follow written directions for best results</b> |

## Agent [Info](#)



✉ admin@team-harlington.com

