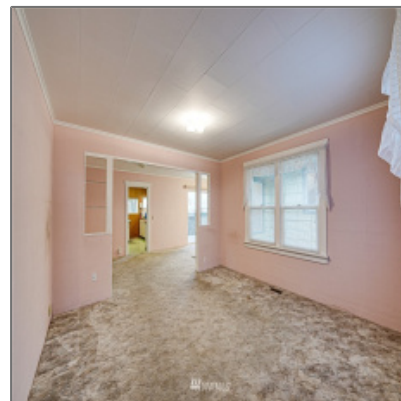


Residential Income For Sale

3,024 Sqft - 3515 T, Anacortes, Washington 98221



Basic Details

Property Type: **Residential Income**

Listing Type: **For Sale**

Listing ID: **NWM1881441**

Price: **\$699,000**

Bedrooms: **0**

Bathrooms: **0**

Half Bathrooms: **0**

Square Footage: **3,024 Sqft**

Year Built: **1935**

Lot Area: **0.25 Sqft**

Structure Type: **Duplex**

Status: **Active**

Total Bathrooms: **0**

Community: **Beale's Maple Grove**

Property Sub Type: **Multi-family**

Features

✓ View: **Mountain(s), See Remarks, Bay**

✓ Roof: **Composition**

✓ Parking: **4**

✓ Furnished: **Unfurnished**

✓ Lot Features: **Dead End Street**

✓ Interior Features: **Storage, Dining Room**

✓ Parking Features: **Rv Parking**

✓ Exterior Features: **Wood**

✓ Site Features: **Gas Available, Rv Parking, Deck**

✓ Heating Cooling Type: **Baseboard**

✓ Utilities: **Natural Gas Available, Electricity Available, Sewer Connected**

✓ Flooring: **Vinyl, Carpet**

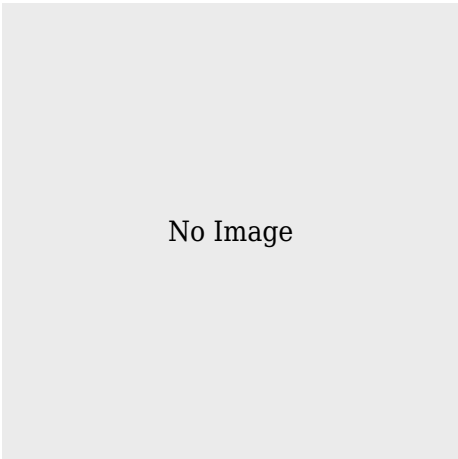
✓ Energy Source: **Electric**

✓	FoundationDetails:	Poured Concrete
✓	Possession:	Closing
✓	PossibleUse:	Residential, Multi-family
✓	ListingTerms:	Cash Out, Conventional
✓	NWM_EnergySource:	Electric
✓	Sewer:	Sewer Connected

Address [Map](#)

Country:	US
State:	WA
County:	Skagit
City:	Anacortes
Zipcode:	98221
Street:	T
Street Number:	3515
Building Name:	Beale's Maple Grove
Floor Number:	0
Longitude:	W123° 23' 37.5"
Latitude:	N48° 29' 36.1"
Street dir suffix:	Avenue
Stories Total:	2

Directions: **From Hwy 20, take State Rd 20 W, take Fidalgo Bay Rd exit, continue onto 35th St, take left onto T Ave; From downtown Anacortes, head South on R Ave, Left on 34th, R on S Ave, L on 35th St, R on T Ave**



✉ admin@team-harlington.com

-
