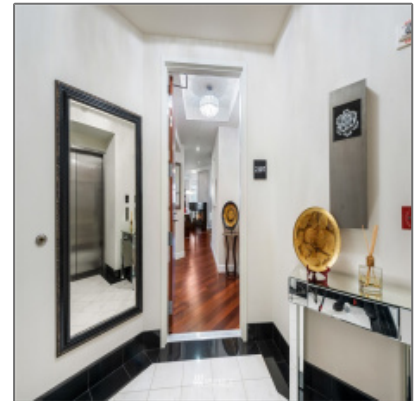
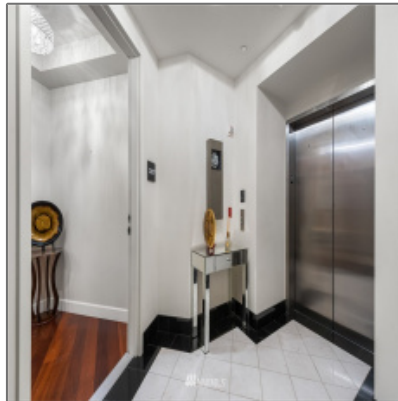


# Residential For Sale

1,878 Sqft - 1920 4th, Seattle, Washington 98101



## Basic Details

Property Type: **Residential**

Listing Type: **For Sale**

Listing ID: **NWM1881934**

Price: **\$1,398,000**

Bedrooms: **2**

Bathrooms: **2**

Half Bathrooms: **1**

Square Footage: **1,878 Sqft**

Year Built: **2009**

Lot Area: **0 Sqft**

Structure Type: **Multi Family**

Status: **Active**

Total Bathrooms: **2.5**

Community: **Downtown**

Property Sub Type: **Condominium**

## Features

✓ Heating System: **1**

✓ Cooling System: **1**

✓ View: **City, See Remarks**

✓ Pets allowed: **Subj To Restrictions**

✓ Roof: **Flat**

✓ Parking: **2**

✓ Furnished: **Unfurnished**

✓ Lot Features: **Curbs, Paved, Sidewalk, Corner Lot, Alley**

✓ Interior Features: **High Efficiency - 90%+, Storage, Dining Room, Bath Off Primary, Walk-in Closet(s), High Efficiency - 90%+, High Efficiency - 90%+, High Efficiency - 90%+, High Efficiency - 90%+, High Efficiency - 90%+, High Efficiency - 90%+**

✓ Parking Features: **Common Garage**

✓ Exterior Features: **Cement/concrete**

✓ Community Features: **Cable Tv, Club House,**

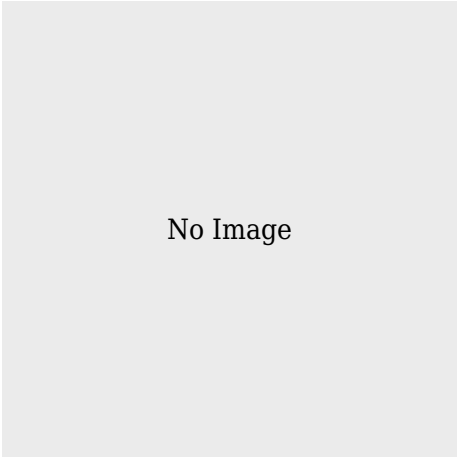
		Elevator, Fire Sprinklers, Game/rec Rm, Gated, High Speed Int Avail, Lobby Entrance, Exercise Room, Hot Tub, Indoor Pool, Athletic Court
✓	Common Property Features:	Cable Tv, Club Houses, Elevator, Fire Sprinklers, Game/rec Rm, High Speed Int Avail, Lobby Entrance, Security Gate, Exercise Room, Hot Tub, Pool-indoor, Athletic Court
✓	Unit Features:	Balcony/deck/patio, Insulated Windows, Primary Bath, Sprinkler System, Jetted/soaking Tub
✓	Laundry Features:	Electric Dryer Hookup, Washer Hookup
✓	Heating Cooling Type:	Heat Pump, Baseboard, Other-see Remarks, 90%+ High Efficiency
✓	Storage Location:	Off Loading Dock - Al
✓	Levels:	One
✓	Fireplaces Total:	1
✓	Garage Spaces:	2
✓	Water Heater Type:	Central
✓	Appliance Hookups:	Cooking-gas, Dryer-electric, Ice Maker, Washer
✓	Utilities:	Electricity Available, Common Area Maintenance, Garbage, Natural Gas Connected
✓	Flooring:	Ceramic Tile, Carpet, Engineered Hardwood, Marble
✓	Dwelling Type:	Attached
✓	Energy Source:	Electric, Natural Gas
✓	Appliances:	Dryer, Microwave, Refrigerator, Washer,


		Dishwasher, Disposal
✓	Inclusions:	Dryer, Microwave, Refrigerator, Washer, Dishwasher, Garbagedisposal
✓	Possession:	Closing
✓	ListingTerms:	Cash Out, Conventional
✓	NWM_EnergySource:	Electric, Natural Gas
✓	GarageYN:	1

### Address [Map](#)

Country:	US
State:	WA
County:	King
City:	Seattle
Zipcode:	98101
Street:	4th
Street Number:	1920
Building Name:	The Escala
Floor Number:	0
Longitude:	W123° 39' 38.5"
Latitude:	N47° 36' 46.8"
Unit Number:	2107
Street dir suffix:	Avenue
Stories Total:	31
Directions:	The Escala is located on the corner of 4th Avenue and Virginia Street.

### Agent [Info](#)



 [admin@team-harlington.com](mailto:admin@team-harlington.com)

-

---