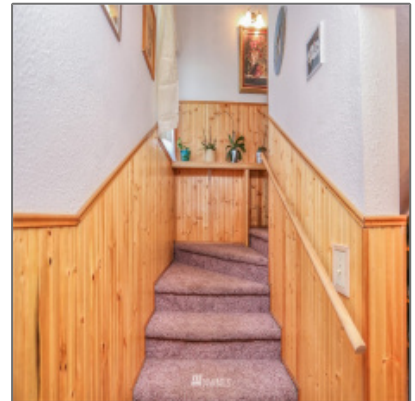


Residential For Sale

2,688 Sqft - 200 Ash, Warden, Washington 98857



Basic Details

Property Type:	Residential
Listing Type:	For Sale
Listing ID:	NWM1883471
Price:	\$299,999
Bedrooms:	3
Bathrooms:	1
Half Bathrooms:	1
Square Footage:	2,688 Sqft
Year Built:	1941
Lot Area:	0.16 Sqft
Structure Type:	House
Status:	Active
Total Bathrooms:	1.5
Community:	Warden
Property Sub Type:	Residential

Features

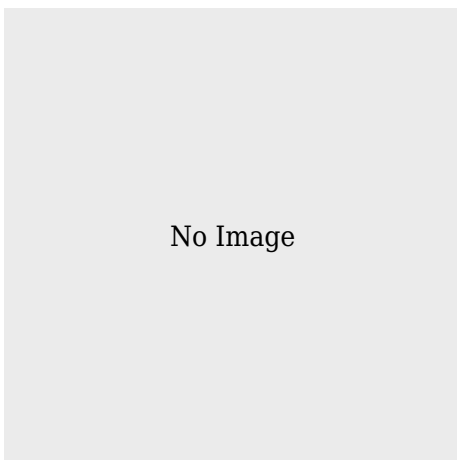
✓ Heating System:	1
✓ Cooling System:	1
✓ Basement:	None
✓ View:	Territorial
✓ Roof:	Metal
✓ Parking:	8
✓ Furnished:	Unfurnished
✓ Lot Features:	Paved, Sidewalk, Corner Lot, Alley
✓ Interior Features:	High Efficiency - 90%+, Forced Air, Storage, Double Pane/storm Window, Dining Room, Bath Off Primary, Walk-in Closet(s), Wired For Generator, High Efficiency - 90%+, High Efficiency - 90%+, High Efficiency - 90%+
✓ Parking Features:	Rv Parking, Attached Garage, Off Street
✓ Exterior Features:	Wood Products, Cement/concrete, Brick

✓	Site Features:	Gas Available, High Speed Internet, Rv Parking, Deck, Shop, Green House
✓	Heating Cooling Type:	Heat Pump, Baseboard, Other-see Remarks
✓	Water Heater Location:	Laundry Room
✓	Building Information:	Built On Lot
✓	Levels:	Two
✓	Water Heater Type:	Electric
✓	Utilities:	High Speed Internet, Natural Gas Available, Electricity Available, Sewer Connected
✓	Flooring:	Ceramic Tile, Laminate, Vinyl, Carpet
✓	Energy Source:	Electric
✓	Covered Spaces:	8
✓	Appliances:	Dryer, Microwave, Refrigerator, Washer, Dishwasher, Disposal, Range/oven
✓	Inclusions:	Dryer, Microwave, Refrigerator, Washer, Dishwasher, Garbagedisposal, Leasedequipment, Rangeoven
✓	FoundationDetails:	Slab
✓	Possession:	Closing
✓	Topography:	Level
✓	PropertyCondition:	Good
✓	ListingTerms:	Cash Out, Conventional, Va Loan
✓	NWM_EnergySource:	Electric
✓	Sewer:	Sewer Connected

Address [Map](#)

Country:	US
State:	WA
County:	Grant
City:	Warden
Zipcode:	98857
Street:	Ash
Street Number:	200
Building Name:	Warden
Floor Number:	0
Longitude:	W120° 57' 40.9"
Latitude:	N46° 58' 6.6"
Street dir prefix:	S
Street dir suffix:	Avenue
Stories Total:	0
Directions:	From Moses Lake, south on Hwy 17, left on Hwy 170, right on Ash, building on left.

Agent [Info](#)



✉ admin@team-harlington.com