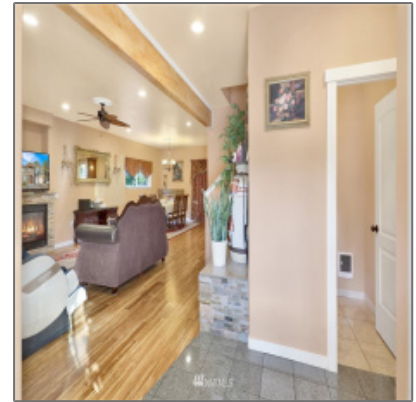


Residential For Sale

2,316 Sqft - 2841 Sunset, Bellingham, Washington
98226



Basic Details

Property Type: **Residential**

Listing Type: **For Sale**

Listing ID: **NWM1882624**

Price: **\$899,000**

Bedrooms: **4**

Bathrooms: **2**

Half Bathrooms: **1**

Square Footage: **2,316 Sqft**

Year Built: **2014**

Lot Area: **0.36 Sqft**

Structure Type: **House**

Status: **Active**

Total Bathrooms: **2.5**

Community: **Barkley**

Property Sub Type: **Residential**

Features

✓ Heating System: **1**

✓ Basement: **None**

✓ View: **Territorial**

✓ Roof: **Composition**

✓ Parking: **2**

✓ Furnished: **Unfurnished**

✓ Lot Features: **Paved**

✓ Interior Features: **High Efficiency - 90%+, Forced Air, Storage, Wall To Wall Carpet, Double Pane/storm Window, Dining Room, Water Heater, Ceramic Tile, Laminate, Hardwood, French Doors, Tankless Water Heater**

✓ Parking Features: **Rv Parking, Attached Garage**

✓ Exterior Features: **Stone, Cement/concrete**

✓ Site Features: **Cable Tv, High Speed Internet, Rv Parking, Outbuildings, Fenced-**

		fully, Patio
✓	Heating Cooling Type:	Baseboard, Wall, 90%+ High Efficiency
✓	Building Information:	Built On Lot
✓	Levels:	Two
✓	Fireplaces Total:	2
✓	Garage Spaces:	2
✓	Utilities:	Cable Connected, High Speed Internet, Electricity Available, Sewer Connected, Natural Gas Connected
✓	Flooring:	Ceramic Tile, Laminate, Carpet
✓	Energy Source:	Electric, Natural Gas
✓	Covered Spaces:	2
✓	Appliances:	Dryer, Microwave, Refrigerator, Stove/range, Washer, Dishwasher, Disposal
✓	Inclusions:	Dryer, Microwave, Refrigerator, Stoverange, Washer, Dishwasher, Garbagedisposal
✓	FoundationDetails:	Poured Concrete
✓	Possession:	Closing, Negotiable
✓	Topography:	Level
✓	ListingTerms:	Cash Out, Conventional, Fha, Va Loan
✓	NWM_EnergySource:	Electric, Natural Gas
✓	GarageYN:	1
✓	Sewer:	Sewer Connected

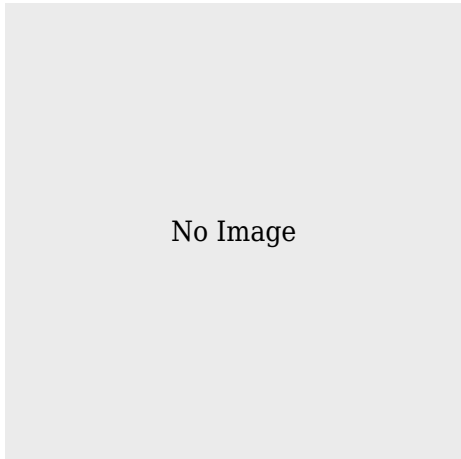
Address [Map](#)


Country: **US**

State:	WA
County:	Whatcom
City:	Bellingham
Zipcode:	98226
Street:	Sunset
Street Number:	2841
Floor Number:	0
Longitude:	W123° 33' 52.9"
Latitude:	N48° 46' 49.9"
Street dir prefix:	E
Street dir suffix:	Drive
Stories Total:	0

Directions: **From I-5 take exit
 255 for E Sunset
 Dr, Go East for
 about 1.5 miles and
 the house is on the
 left side.**

Agent [Info](#)



 admin@team-harlington.com