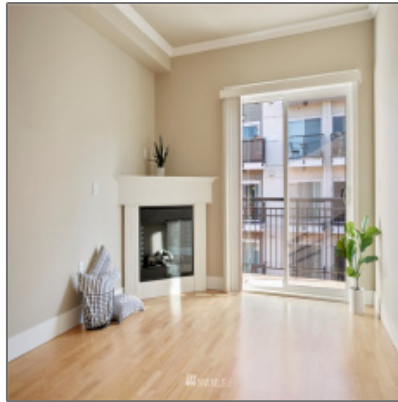


Residential For Sale

644 Sqft - 1015 Railroad, Bellingham, Washington
98225



Basic Details

Property Type: **Residential**

Listing Type: **For Sale**

Listing ID: **NWM1885005**

Price: **\$350,000**

Bedrooms: **1**

Bathrooms: **1**

Half Bathrooms: **0**

Square Footage: **644 Sqft**

Year Built: **2005**

Lot Area: **0 Sqft**

Structure Type: **Multi Family**

Status: **Active**

Total
Bathrooms: **1**

Community: **Downtown**

Property Sub
Type: **Condominium**

Features

✓ Heating System: **1**

✓ View: **Territorial, City**

✓ Pets allowed: **See Remarks, Subj To Restrictions**

✓ Roof: **Flat**

✓ Parking: **1**

✓ Furnished: **Unfurnished**

✓ Lot Features: **Paved, Sidewalk, Alley**

✓ Interior Features: **Wall To Wall Carpet, Walk-in Closet(s), French Doors, High Tech Cabling, Laminate Hardwood, Sprinkler System, Built-in Vacuum**

✓ Parking Features: **Common Garage**

✓ Exterior Features: **Brick**

✓ Community Features: **Cable Tv, Elevator, Fire Sprinklers, Gated, High Speed Int Avail, Lobby Entrance, Trail(s)**

✓ Common Property: **Cable Tv, Elevator, Fire**

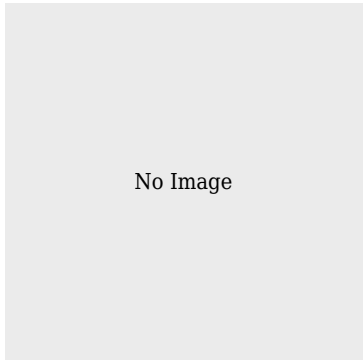
	Features:	Sprinklers, Gated Entry, High Speed Int Avail, Lobby Entrance, Trails
✓	Unit Features:	Balcony/deck/patio, Insulated Windows, Primary Bath, Walk-in Closet, Top Floor
✓	Laundry Features:	Electric Dryer Hookup, Washer Hookup
✓	Heating Cooling Type:	Central A/c, 90%+ High Efficiency
✓	Storage Location:	Bike Storage In Garage
✓	Water Heater Location:	Laundry Closet
✓	Levels:	One
✓	Fireplaces Total:	1
✓	Garage Spaces:	1
✓	Water Heater Type:	Electric
✓	Appliance Hookups:	Dryer-electric, Washer, Cooking-electric
✓	Utilities:	Electricity Available, Common Area Maintenance, Garbage
✓	Flooring:	Laminate, Carpet
✓	Dwelling Type:	Attached
✓	Energy Source:	Electric
✓	Appliances:	Dryer, Microwave, Refrigerator, Stove/range, Washer, Dishwasher, Disposal
✓	Inclusions:	Dryer, Microwave, Refrigerator, Stoverange, Washer, Dishwasher, Garbagedisposal
✓	Possession:	Closing
✓	ListingTerms:	Cash Out, Conventional
✓	NWM_EnergySource:	Electric



Address [Map](#)

Country:	US
State:	WA
County:	Whatcom
City:	Bellingham
Zipcode:	98225
Street:	Railroad
Street Number:	1015
Building Name:	Morse Square Condominium
Floor Number:	0
Longitude:	W123° 31' 3.8"
Latitude:	N48° 44' 48"
Unit Number:	507
Street dir suffix:	Avenue
Stories Total:	5
Directions:	I-5 to Lakeway Drive. West on Lakeway Dr until E Holly St. Left on N State St. Right on E Maple St. Left on Railroad Ave. - Park on E Maple or Railroad for showings.

Agent [Info](#)



✉ admin@team-harlington.com

